



# COMMUNITY SERVICES & FAMILY HOUSING

## CUPERTINO, CA

## Affordable Housing & Services Brought to Community

**DESCRIPTION** The Cupertino Community Services and Family Housing project provides affordable housing and various assistance programs to members of the Cupertino community. The project contains 24 units of multi-family housing, a residential community building, and an office building for Cupertino Community Services, framing two internal courtyards. While the larger courtyard will serve the residents, the smaller courtyard will be an extension of the CCS building and the community space to provide a gathering place for both CCS employees and residents. The home for CCS is a dominant feature on the site due to its public nature and the housing remains at a smaller scale to fit in with the neighboring homes.

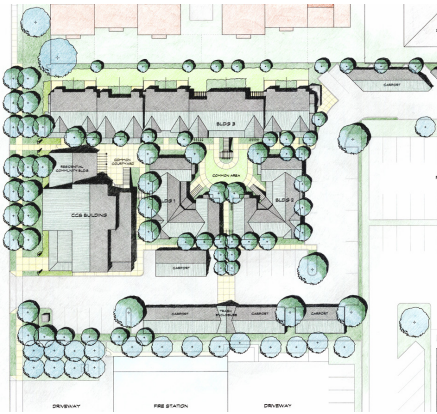
**VISION** Integration of a Social Service Center Headquarters with services and affordable housing.

**PROJECT REQUIREMENTS** Design a mixed use development with 24 units of affordable family housing and a long term home for the Cupertino Community



## DESIGN FEATURES

- Community Service Offices/ Headquarters
- Counseling services
- Food Pantry
- Clothes Pantry
- Community Room with Kitchen
- Affordable Housing



**Client:** Cupertino Community Services/ BRIDGE Housing Corp.

**Building size/acres:** 7,000 sq. ft./ 1.18 acres

**Density:** 24 units

**Completion:** 2002

**Construction est.:** \$7M

### Contact:

Brad Wiblin  
Senior Vice President  
BRIDGE Housing Corp.  
600 California #900  
San Francisco, CA 94108  
415.989.1111 ext. 7513

