



WESTBOURNE PARK BUILDING C1

FREMONT, CA

Urban Park Homes at BART's Front Door

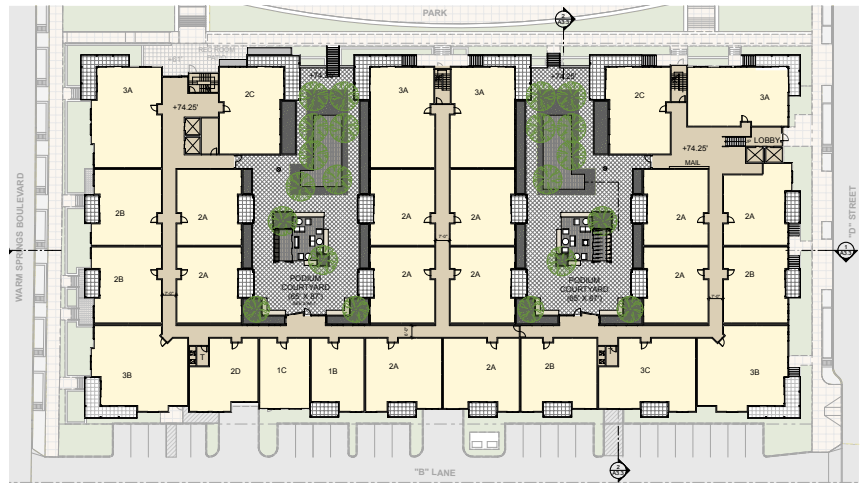
DESCRIPTION Building C1 is located within the Warm Springs Transit Oriented Village development, a new mixed-use neighborhood including residential and retail, close to transit and other community facilities. Within this development of ±1,000 units, the C1 building prominently sits across the street from the Warm Springs Bart Station along Warm Springs Boulevard and directly against the development's 1/2 acre Urban Plaza and Park.

The C1 Building includes 136 units of 1, 2 and 3 bedroom units within 6 stories. Spacious Unit Balconies along the upper levels and Unit Entry Stoops along the lower levels that are accessible from the public sidewalk, provide a sense of scale and articulate the building's mass. In addition, the "E" shape plan provides residential courtyards that open to the adjacent Urban Plaza and Park.

VISION Located in one of the most prominent areas of the development, Building C1 will be an instrumental part of this vibrant mixed-use neighborhood. It will create a safe and inviting transit-oriented community for residents.

DESIGN FEATURES

- Residential Courtyards & Rooftop Decks
- Spacious Unit Balconies
- Public Plaza & Park
- Pedestrian friendly Unit Entry Stoops
- Adjacent BART station will offer residents the ability to travel easily



Client: Toll Brothers

Building size/acres: 136 units/
1.7 acre

Density: 80 du/acre

Completion: Anticipated

February 2019

Contact:

Rick Nelson
Division President
Toll Brothers
6800 Koll Center Parkway, Suite 320
Pleasanton, CA 94566
925.249.6000

