



# SANTA CLARA TRANSIT AREA PLAN

SANTA CLARA, CA

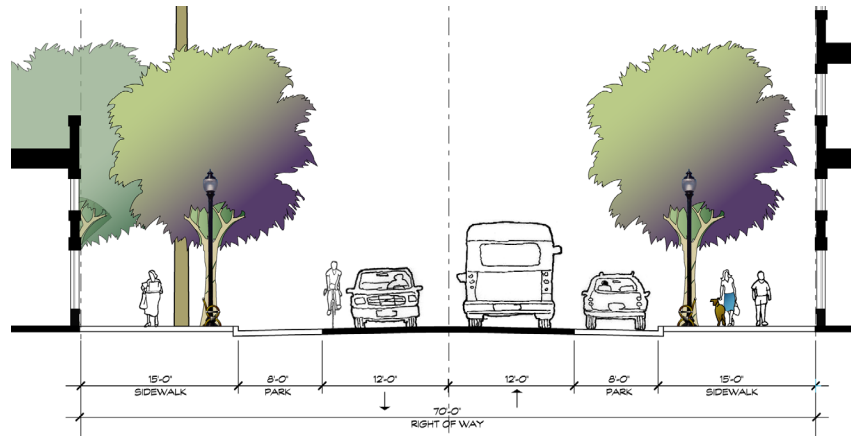
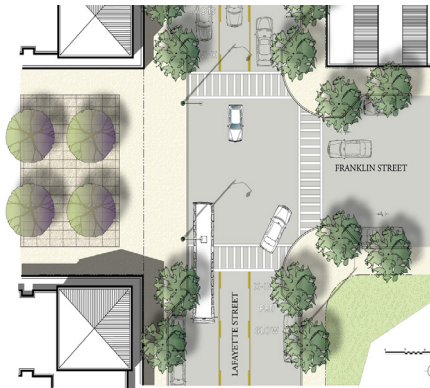
## Future Opportunities for Historic Train Depot

**DESCRIPTION** The Santa Clara Transit Area Study, initiated in Fall 2001 and funded by a grant from the Metropolitan Transportation Commission, examined existing conditions and identified opportunities for new and in-fill development and redevelopment around the historic train depot and future BART Station in order to foster development of transit-supportive land uses and enhance the vitality of the area. The study envisions a new “downtown main street” mixed use area within Santa Clara’s historic Old Quad district and adjacent to the Caltrain and BART stations, as well as a major new mixed use entertainment and employment district with high density housing and a major park.



## DESIGN FEATURES

- High intensity community commercial uses and new housing
- Larger scale buildings establish a more urban edge
- New commercial uses create an intense, active new neighborhood in a desirable setting



**Client:** Metropolitan Transportation Commission

**Contact:**

Rajeev Bhatia

Partner

Dyett & Bhatia

Urban and Regional Planners

1330 Broadway, Suite 604

Oakland, CA 94612

415.956.4300 x15

[rajeev@dyettandbhatia.com](mailto:rajeev@dyettandbhatia.com)

