



MURAL AT MACARTHUR BART STATION

OAKLAND, CA

Transforming Parking Lot to Vibrant Mixed-Use Community

DESCRIPTION The project provides 90 units of affordable family housing located at the MacArthur BART Station. The project occupies Parcel D of the MacArthur Transit Village, which is a master plan to redevelop the existing parking lot into a mixed-use transit oriented development. The project consisted of two studios, 22 one-bedroom, 29 two-bedroom, and 37 three-bedroom units and associated common facilities, on a .78 acre site, creating a density of 115 du/acre. The building is five stories of residential type III-A wood framing over a sub-grade concrete parking garage of type I-A construction.

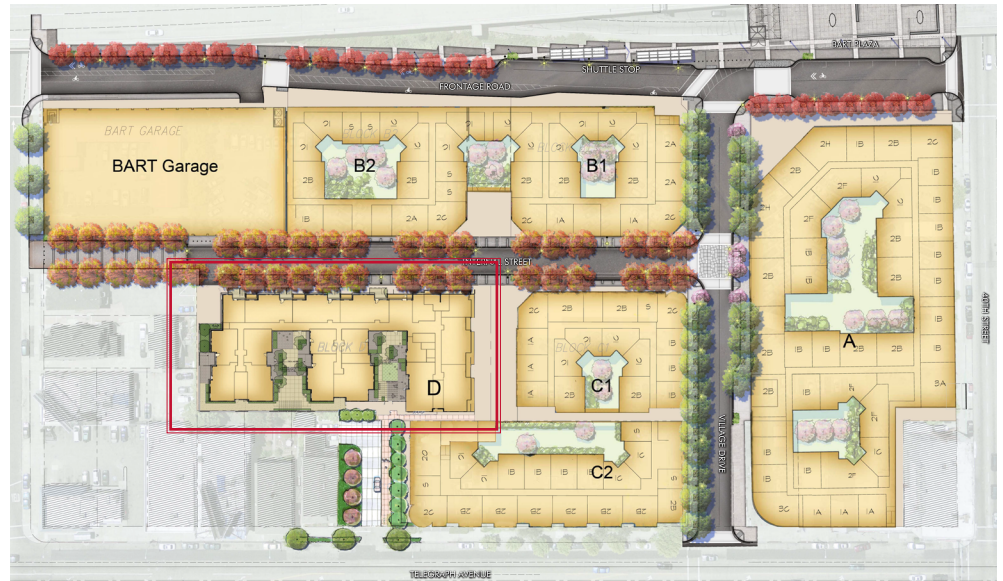
The project is coordinated with the work of the Master Developer for street improvements including miscellaneous offsite work such as sidewalks, landscaping and civil engineering. The project is green point rated with a score of 168. A solar thermal domestic hot water system serves 40% of the domestic hot water load, and the project is prewired for future photovoltaic installation.

DESIGN FEATURES

- Developing a surface parking urban infill site adjacent to a transit station
- Incorporated New Urbanist design principles of walkability, mixed use and public spaces
- Development responds to market demand for housing in the North Oakland area

GREEN FEATURES

- Solar Thermal Hot Water
- Bicycle Parking
- Accessible Transit
- Energy Star Appliances
- Engineered Lumber
- Permeable Paving
- Low VOC & Recycled Materials



Client: BRIDGE Housing

Density: 90 units/ 115 du/acre

Const. completed: January 2016

Construction est.: \$23.5M

Program: .78 acres

Contact:

Joe McCarthy
BRIDGE Housing Corporation
600 California Street, Suite 900
San Francisco, CA 94108
415.989.1111

