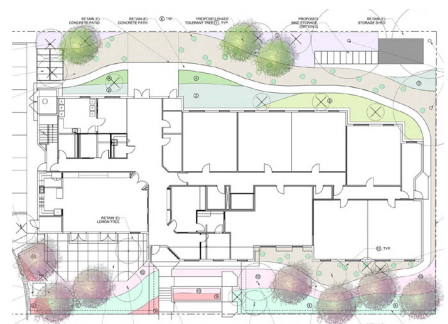




Needed Renovation Provides Sustainable Opportunities

DESCRIPTION The Providence House project combines the replacement of decaying fiber lap siding with updates to common areas and a new water efficient landscaping for this supportive housing community adjacent to downtown Oakland. The main facade faces south and the new envelope is designed to moderate interior temperatures and reduce energy usage. The landscape design replaces existing ornamental species with xeriscaping and low-water plant species, while retaining existing redwoods and a vegetable garden used by residents.

VISION Use the opportunity of a long needed renovation to integrate current sustainability principles and reduce client operating costs.



DESIGN FEATURES

- Simplified exterior cladding
- Renovated resident common areas and mailboxes
- More efficient common area and exterior lighting

GREEN FEATURES

- New high efficiency windows
- Increased exterior insulation
- High efficiency LED lighting
- Drought Tolerant / Xeriscaped landscaping
- Photovoltaic system



Client: Providence Supportive Housing

Building size/acres: 22,255 sq.ft./ 0.5 acre

Density: 41 units

Completion: 2017

Contact:

Timothy Zaricznyj
Providence Supportive Housing
800 Fifth Avenue, Suite 1200
Seattle, WA 98104
425.525.6639

Scott Smith
Roberts Obayashi
20 Oak Court
Danville, CA 94526
925.820.0600

